



Thank you

The PTA would like to thank everybody who contributed to our events last year. The children certainly enjoyed themselves and have benefited greatly, as did our Build Fund. We are very grateful to all the helpers, riders, cake makers and many more for all their efforts.

Welcome

Welcome to all our Reception children and their parents and carers, all are automatically members of the PTA so come along and join in, even if you have just a hour to spare at our Christmas fair, or could offer a prize for our raffle. Every little helps. We fundraise in many different ways from Cinema nights, Christmas fair, BBQ to 180 mile plus rides!

St Anne's Needs YOU!

We need a new PTA chair this year and are taking turns to lead on events and meetings. Come and join us, help lead one event or be a helper and try us out. Our children really rely on PTA funds for many things throughout the year. Speak to your class reps or Clare Daniel.

Lisa Vose (Publicity)

Lisa.vose@hotmail.co.uk

What our Events Pay For?

Our PTA funds pay for many things throughout the year, these include, our Music Teacher, coach trips, theatre trips, equipment, iPads, learning resources, Education City resource, books, global and science week, author visits and more.....

Other ways you can help

easyfundraising.org.uk

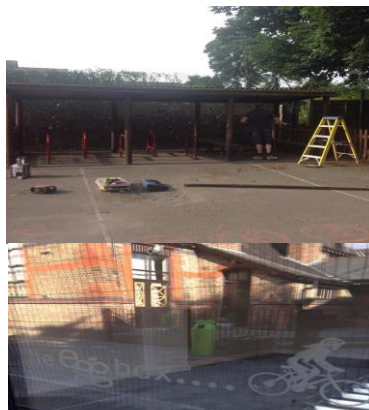
When shopping online log on to this site first, put in St Anne's Fulshaw and access your chosen shopping/insurance/holiday booking site etc. through there first, your purchases will help raise some funds for our school.

Corporate Charity Fund Matching

Many companies and organisation offer charity matching schemes, if you are involved with a charity or activity they will match funds raised, usually up to £1000. Ask your company today.

School Library and Learning Resource – It's here!

It's nearly finished...We are awaiting final certifications and building regulations but we should be able to move it very soon. Many thanks to Egg Homes who funded more than half the cost with the rest fundraised by the PTA & bike ride donations. The Egg Box cost more than £50,000 and it will be a fantastic asset to the school.



Dates for your diary.....

Cinema Night – 14 October

**Non Uniform & Cake Sale –
Friday 28 Oct**

**Bag to School – Friday 25
November**

Christmas Fair – Fri 2 Dec 6-8

**Non-uniform & Cake Sale –
Wednesday 21 Dec**

Disco – Friday 27 Jan 6-8pm

**Non-uniform & Cake Sale –
Friday 17 Feb**

**Boden shopping evening –
TBC (Spring time)**

**Quiz night – Friday 17 March
7.30 start**

**Non-uniform & Cake Sale –
Friday 31 March**

Bag to School - Tues 25 April

Family Bingo – Fri 28 April 6-8

**Non-uniform & Cake Sale –
Friday 31 May**

**Bike Ride – Fri 9 – Sun 11
June**

**BBQ - Friday 16th June with a
reserve date of 14th July**

**Non-uniform & Cake Sale –
Tuesday 25 July**

****New Ideas Welcome****

Class Reps: Class 1 Clare Lockett & Jane Gilchrist **Class 2** Caroline Kelf & Rachael Thomas
Class 3 Alison Marris & Lynsey Baird-Nelson **Class 4** Sophie Taylor **Class 5** Natalie Lloyd & Leila Jerman