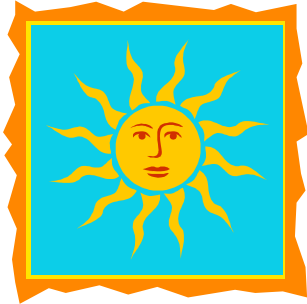


St Anne's Fulshaw CE Primary School

June 2014 - Summer 2

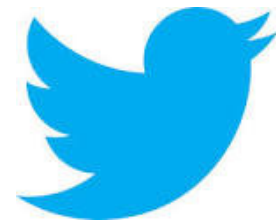


As the year comes rapidly to a close we still have many events happening in school over the next six weeks.

The half term began with a real reminder of why our school is such a supportive and special community when our PTA bike ride raised £5,500 for the school. What a brilliant effort everyone!

I hope you can join us as we head towards the end of the year.

We hope that our communication methods are always effective – we are able to e-mail most people now – but of course these systems only work if we have the correct information from you. Please make sure that you update Mrs Clark in the school office and Stef at the After School Club if you have a change of e-mail address or mobile number, including numbers for your emergency contacts. Our Twitter feed is @stannesfulshaw and this will be a point of contact for adverse weather conditions, as will the school's website and e mail system.



Please keep us updated.



Please remember to give the school at least one week's notice if your child decides to change from packed lunches onto school lunches or back the other way. Cash or cheques are welcome – cheques payable to Cheshire East Borough Council please. We cannot bank cheques for lunches if they are addressed to the school address rather than CECs so they will be returned and alternative payment requested. The cost of a school lunch will be £2.40 from September 2014.

Don't forget that our menus are also available on the school website so children can see what is on offer each day.

Lunches and snacks should not contain crisps, chocolate or sweets. Healthy snacks are available from our cook Janis at a cost of 20p per day.

Please also ensure that your child has a water bottle in school every day. Water is available to the children all day and we encourage them to drink when they need to.



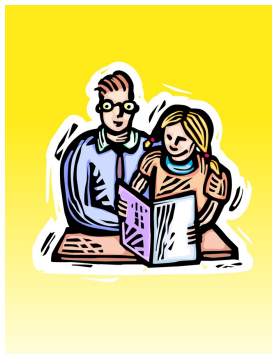
Our After School Club continues to be very popular and we are currently making decisions about staffing it from September. If you already know what your pattern of attendance will be, please could you let Stef know as soon as possible?

There will be some slight changes to the terms and conditions from September around late fees but we will make sure that you have the most up to date information by the start of the new year.

Please note that no holidays are authorised during term time. This includes permission requested to leave school early on the last day of term to 'get ahead of the traffic'. This is in accordance with DfE instructions issued to schools before the start of the academic year. I am delighted to report that our attendance up to the middle of May 2014 was 97.41% which is high compared to the national figure. Well done to everyone and thank you for valuing every day of your child's education.



Homework Reminder



Reception: 10-15 minutes of reading daily + weekly Jolly Phonics sounds and pencil case words

Years 1 and 2: 10-15 minutes of reading daily + 10-20 minutes of phonics / maths activities weekly and occasional topic work where appropriate

Years 3 and 4: 15-20 minutes of reading daily + 20 minutes of phonics / times tables / maths activities weekly and occasional topic work where appropriate

Years 5 and 6: 30 minutes of reading daily + 30 minutes of phonics / times tables / maths activities weekly and occasional topic work where appropriate

Holiday homework is **optional** – parental feedback indicates that it is not always easy to manage when children in different classes have different amounts, however a number of parents have stated how much their children enjoy having something to keep them ticking over during the holidays.

Please could I remind all parents to send in inhalers and medication for children who have on-going conditions? If your child has had any changes to their health over recent months, please let us know so that we are well prepared to meet their needs.



We can administer medicines in school with a written consent form which must be completed by either parent. If we do not have this form we cannot administer anything.

Dates for your diary...

These dates may be subject to change, and this may be beyond our control. We will always try to inform you of any change in good time.

Week 34:

Monday 9th June

Wednesday 11th June

Thursday 12th June

Annual Health and Safety review at 9.30am

Tempest Sports Team photos pm

Year 6 boys rugby competition at WHS pm

Quadkids Athletics competition at WHS

after school

Friday 13th June

Paralympic Sport Taster morning at WHS

Week 35:

Monday 16th June

Tuesday 17th June

Wednesday 18th June

Friday 20th June

Saturday 21st June

Gifted and Talented Cluster meeting after school

Wilmslow Schools' Commonwealth Games Event – activities across the town after school

Class 2 to visit Tatton Park

Inference Training for all teaching assistants

PTA BBQ – 6.30pm-8.30pm

PTA Sponsored Walk

Week 36:

Monday 23rd June

Tuesday 24th June

Wednesday 25th June

Thursday 26th June

Y6 at WHS on transition day

Y6 at WHS on transition day

Sports Awards Evening at WHS from 7.00pm

Year 4 and 5 pupils to play with the Halle at Bridgewater Hall this afternoon

Week 37: School Sports Week / WHS Year 10 work experience week

Monday 30th June

Tuesday 1st July

Wednesday 2nd July

Thursday 3rd July

Year 1 are visiting Manchester Climbing Centre

World Cup football – Year 1 and 2 at Lindow after school

World Cup football – Year 3 and 4 at Lindow after school

World Cup football – Year 5 and 6 at Lindow after school

Class 1 are visiting Glen Jakes Riding School

Classes 4 and 5 are visiting Chill Factor

Friday 4th July

Year 2 and 3 are going to Manchester Climbing Centre
Sports Day at 1.30pm
PTA BBQ – reserve date

Week 38:

Monday 7th July

Annual Academic Reports released to parents

Reserve Sports Day at 1.30pm

New Starters' Evening at 6.30pm

Tuesday 8th July

Class swap 1.30pm-3.00pm

Wednesday 9th July

Music Evening at 7.00pm

Thursday 10th July and

Bikeability Training for Year 6 pupils

Friday 11th July

Week 39:

Tuesday 15th July

Junior performance at 7.00pm

Wednesday 16th July

Junior performance at 9.30am

Infant performance at 2.00pm

Governors' defibrillator training and social event at 7.00pm

Thursday 17th July

Class swap 9.15am-11.45am

Week 40:

Monday 21st July

Leavers' Lunch

Fulshaw's Got Talent pm

Parents' Evening from 3.30pm onwards

Wednesday 23rd July

Leavers' Service in St Anne's Church at 9.00am

We will try to give you as much notice as possible if events change, however some activities are organised and run by other schools and are therefore beyond our control.

Please note the change of date for Sports Week – as events started filling up the calendar it became apparent that the Year 6 transition events and the Year 4/5 Halle event would fall within the same week so we moved Sports Week back a week to ensure everyone was fully involved.